

## SUPPLEMENTAL MATERIALS

*ASCE Journal of Waterway, Port, Coastal, and Ocean Engineering*

# Fortescue Inlet: Offshore Deposition Basins for Navigation Channel Management in Small Craft Inlets

Matthew S. Janssen, Laura Lemke, Jon K Miller, and W. Scott  
Douglas

**DOI:** 10.1061/(ASCE)WW.1943-5460.0000689

© ASCE 2021

[www.ascelibrary.org](http://www.ascelibrary.org)

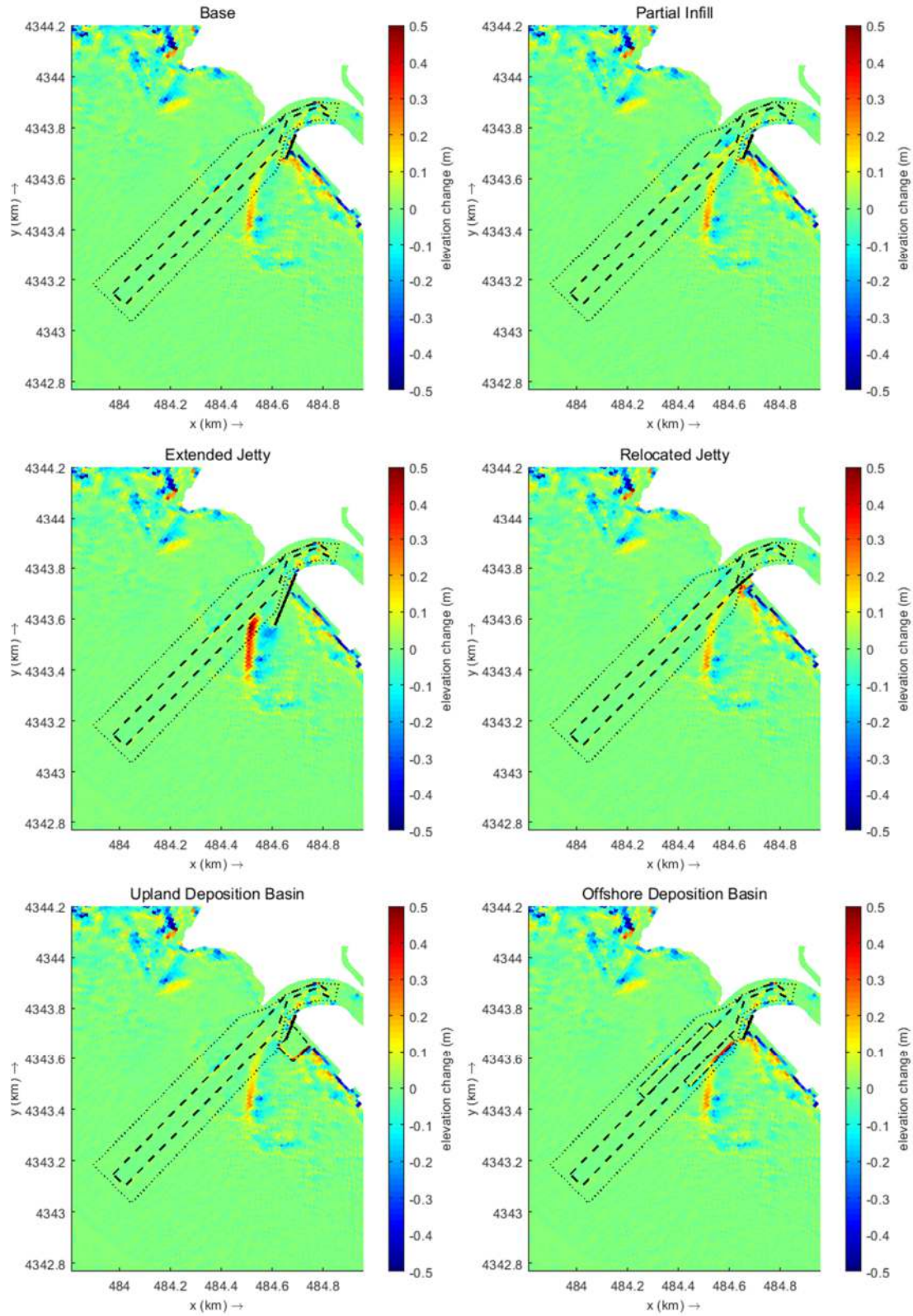


Figure S1: Cumulative Sedimentation/Erosion for modeled period (28-days): SSE Typical conditions. Channel limits are denoted by dashed line, Area of interest by dotted line, Jetty by solid black line, and deposition basins by dot and dashed line.

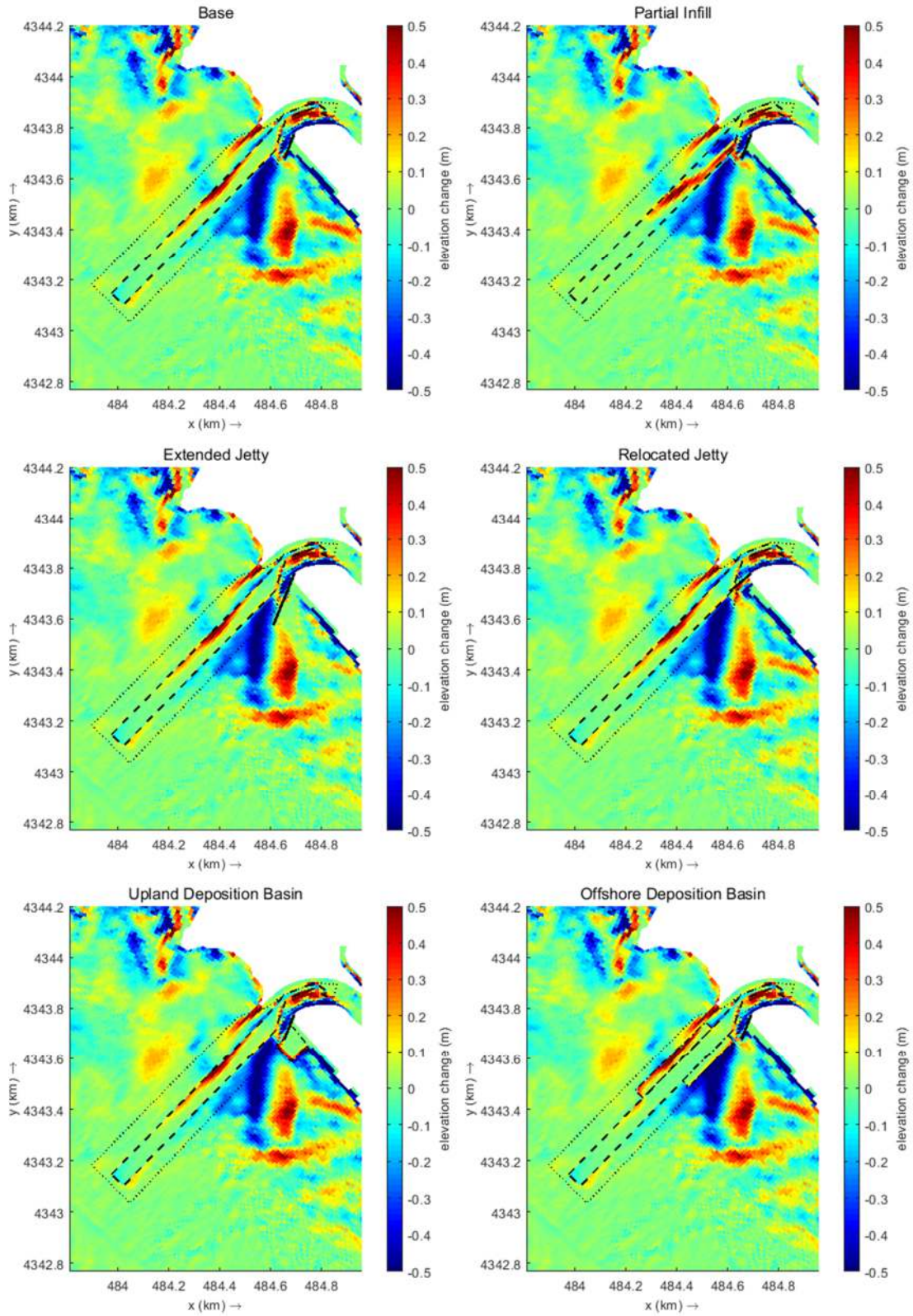


Figure S2: Cumulative Sedimentation/Erosion for modeled period (28-days): WNW Typical conditions. Channel limits are denoted by dashed line, Area of interest by dotted line, Jetty by solid black line, and deposition basins by dot and dashed line.



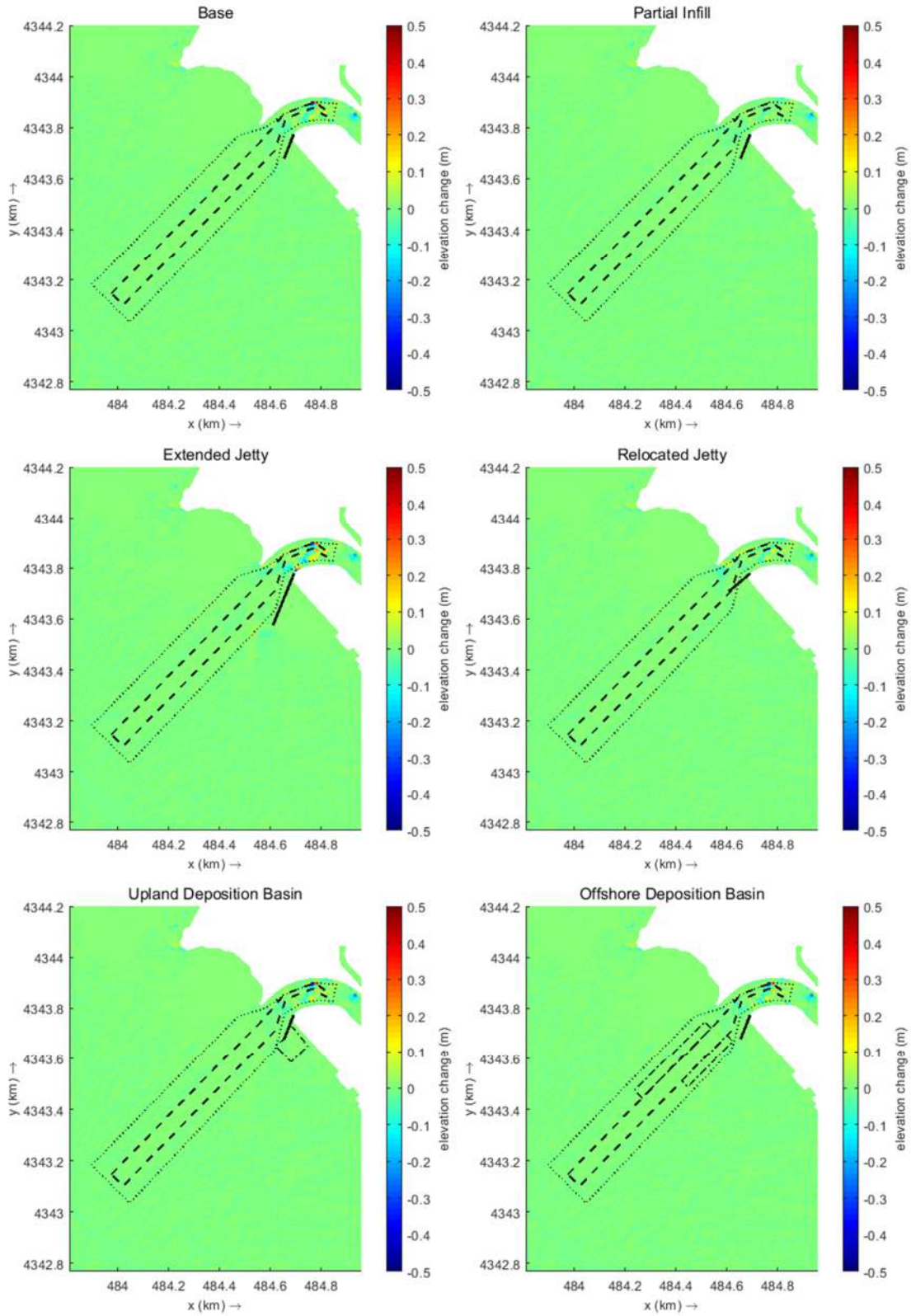


Figure S3: Cumulative Sedimentation/Erosion for modeled period (28-days): Tide (calm) conditions. Channel limits are denoted by dashed line, Area of interest by dotted line, Jetty by solid black line, and deposition basins by dot and dashed line.